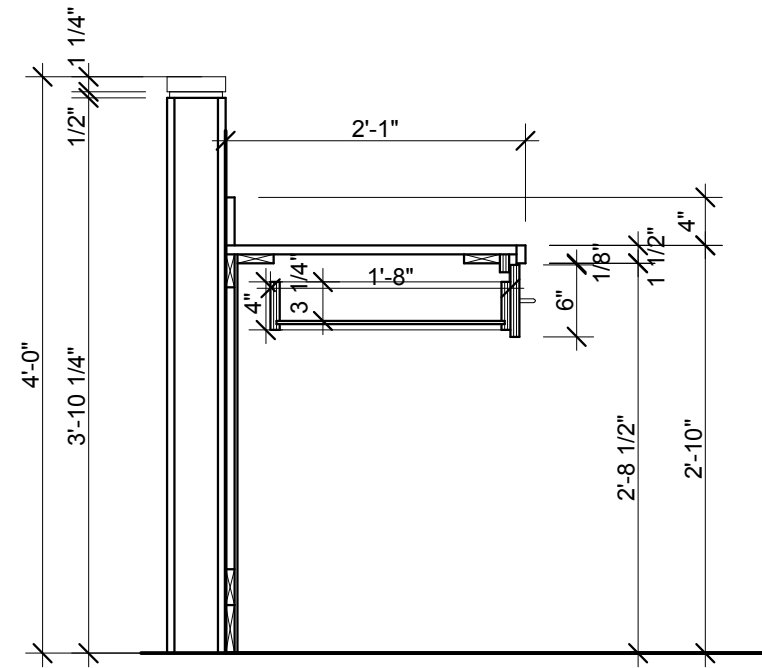
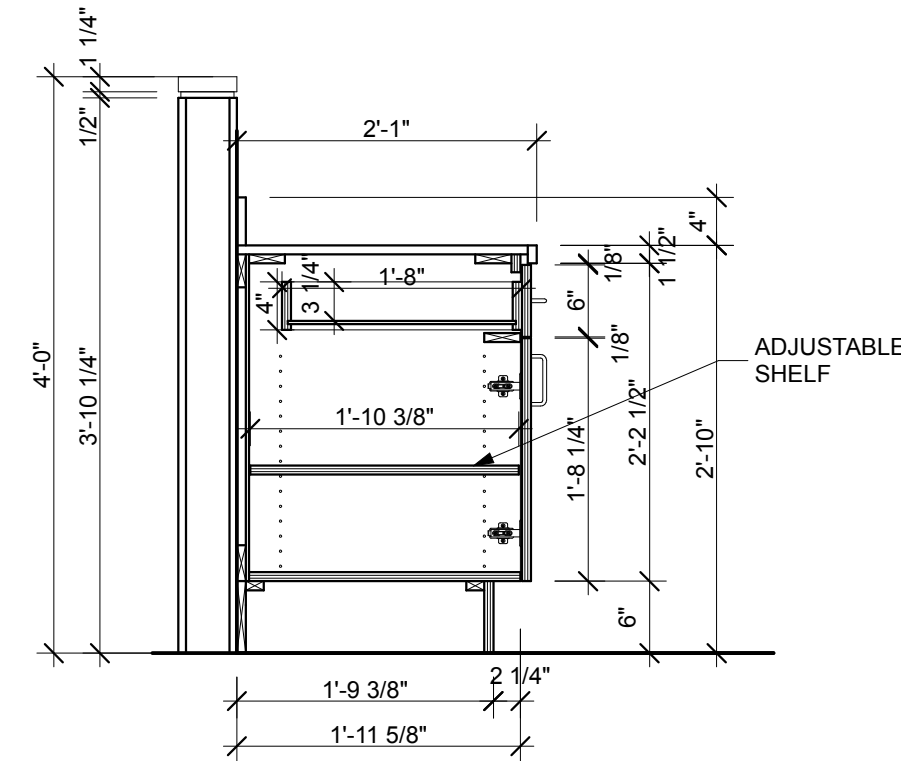


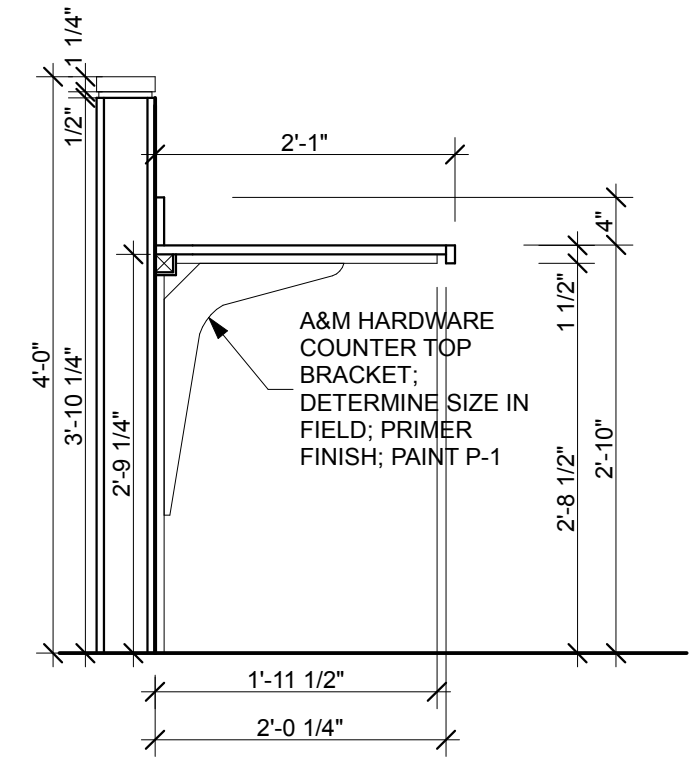
1
A4.20 **MILLWORK SECTIONS**
SCALE: 3/4" = 1'-0"



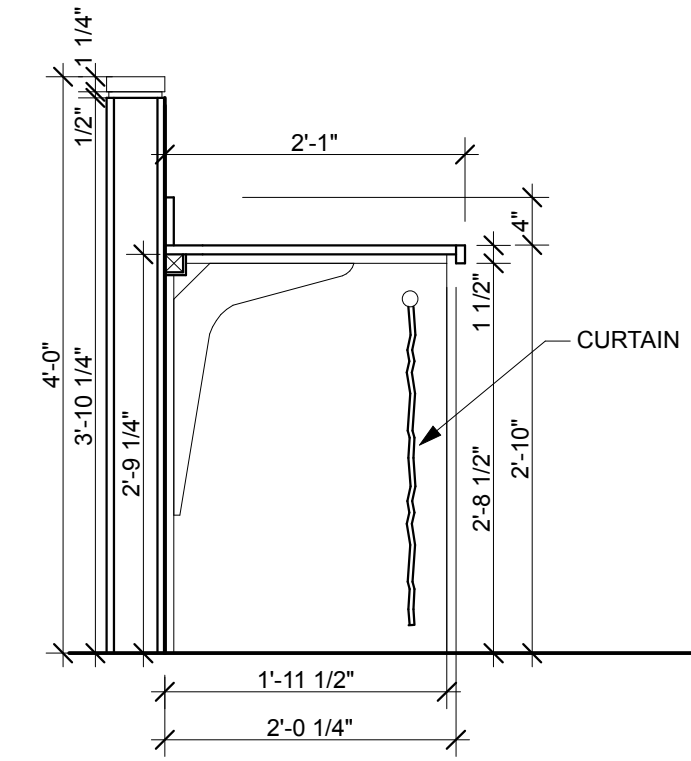
2
A4.20 **MILLWORK SECTIONS**
SCALE: 3/4" = 1'-0"



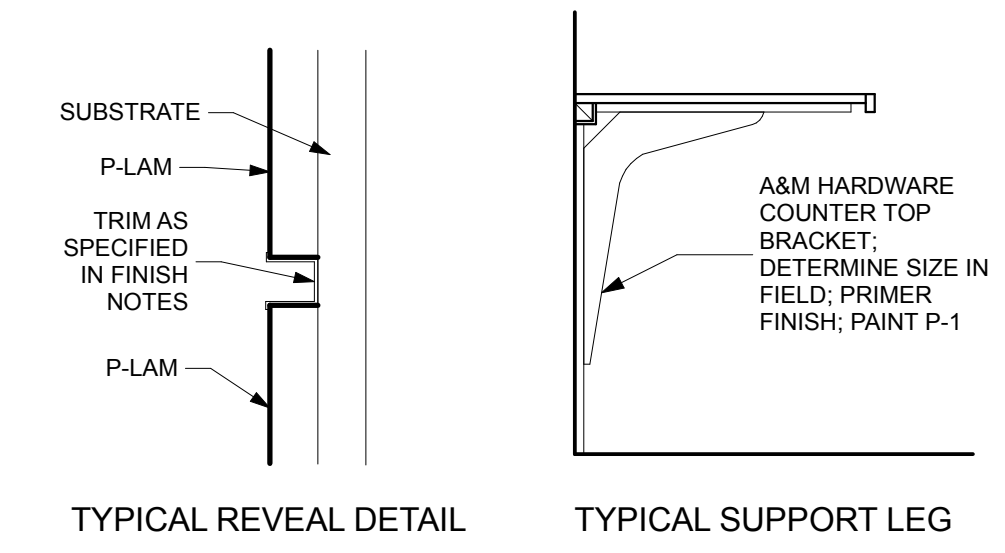
3
A4.20 **MILLWORK SECTIONS**
SCALE: 3/4" = 1'-0"



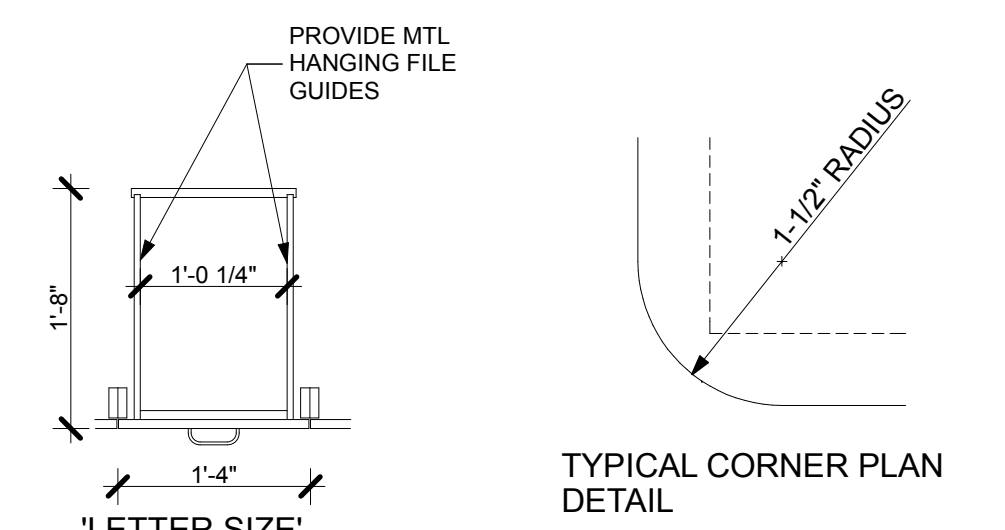
4
A4.20 **MILLWORK SECTIONS**
SCALE: 3/4" = 1'-0"



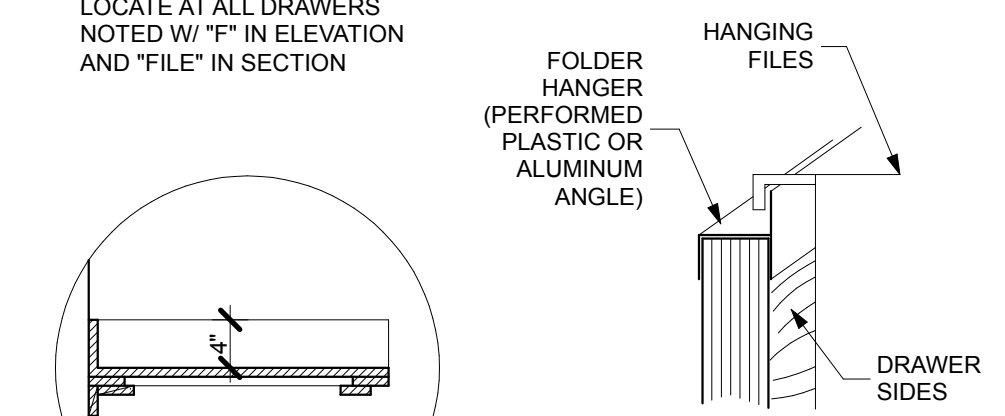
5
A4.20 **MILLWORK SECTIONS**
SCALE: 3/4" = 1'-0"



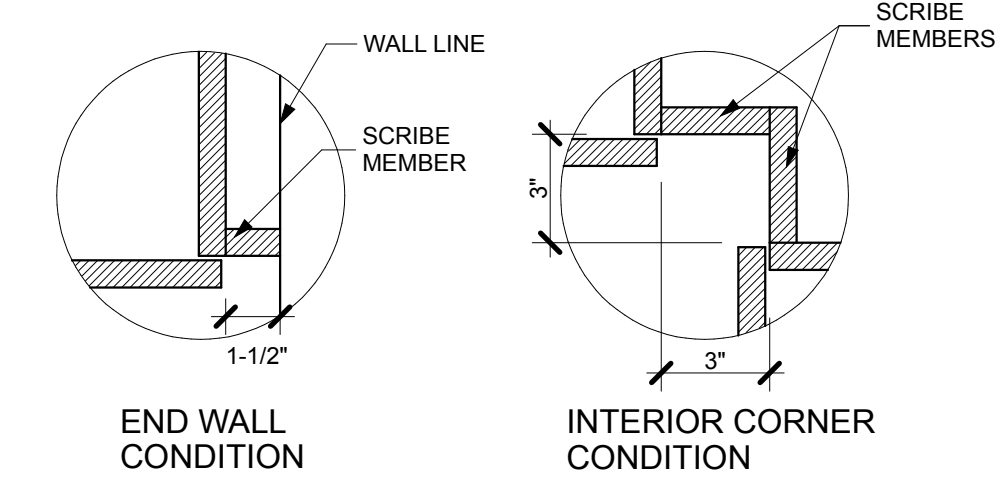
TYPICAL REVEAL DETAIL TYPICAL SUPPORT LEG



TYPICAL CORNER PLAN DETAIL



HANGING FILE DRAWER DETAIL
NOTE: ALL DRAWERS TO BE PENDAFLEX READY



END WALL CONDITION INTERIOR CORNER CONDITION

GENERAL MILLWORK NOTES:

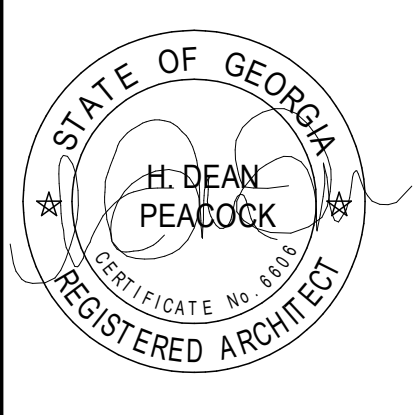
- UNLESS NOTED OTHERWISE, ALL VISIBLE MILLWORK SURFACES TO BE PLASTIC LAMINATE CLAD. ALL INTERIOR CABINET BOXES AND INSIDE DOOR FACES TO HAVE A WHITE MELAMINE FINISH. NO PVC EDGE BANDING SHALL BE USED.
- END OF MILLWORK AT GLASS EXTERIOR WALL WILL NOT HAVE PLASTIC LAMINATE AND WILL BE PAINTED BLACK.
- ALL CABINETS AND SHELVES TO HAVE 1/4" THICK BACK PANELS, UNLESS NOTED OTHERWISE.
- ALL TOE SPACES TO BE CLAD IN PLASTIC LAMINATE. SCRIBE TOEKICK AS REQUIRED IF FLOOR IS NOT LEVEL.
- SEE MILLWORK ELEVATIONS FOR LOCATIONS OF CABINET LOCKS.
- COUNTERTOPS, CABINET FRONTS, CABINET DOORS AND DRAWER FRONTS, AND BASE CABINET SIDES AND BOTTOM PANELS TO BE MADE OF 3/4" INDUSTRIAL GRADE PARTICLE BOARD WITH PLASTIC LAMINATE FINISH. ALL COUNTERTOP WITH SINKS TO BE 3/4" EXTERIOR GRADE PLYWOOD WITH PLASTIC LAMINATE FINISH.
- ALL COUNTERTOPS WITH SINKS TO HAVE A 4" BACKSPASH AND SIDESPLASH. ALL OTHER COUNTERTOPS DO NOT RECEIVE A BACKSPASH UNLESS NOTED OTHERWISE.
- ALL DRAWERS TO HAVE 1/2" SIDES AND 1/4" HARDBOARD BOTTOMS, UNLESS NOTED OTHERWISE.
- PROVIDE 2" DIAMETER HOLES WITH GROMMETS IN COUNTERTOPS ABOVE ELECTRICAL AND COMMUNICATIONS OUTLETS AS REQUIRED. LOCATED BY TENANT AFTER PRIMARY INSTALLATION.
- ALL ADJUSTABLE SHELF STANDARDS SHALL BE LINE-BORED.
- CAULK AT THE INTERSECTION OF ALL MILLWORK EDGES AND THE ADJACENT WALL. CAULK COLOR TO BE APPROVED BY ARCHITECT.
- WHERE FILE DRAWERS ARE INDICATED, DRAWERS SHALL BE APPROPRIATE SIZE FOR LETTER SIZE PENDAFLEX HANGING FILE FOLDERS. PROVIDE ANGLE AS SHOWN.
- VERIFY EQUIPMENT SIZES WITH EQUIPMENT VENDOR TO INSURE PROPER CLEARANCES PRIOR TO FABRICATION.
- ⓧ INDICATES ELECTRICAL OUTLET LOCATIONS.
- ALL MILLWORK DIMENSIONS TO BE FIELD VERIFIED PRIOR TO FABRICATION.
- ALL MILLWORK DOOR AND DRAW PULLS TO BE 4" WIRE PULL WITH SATIN STAINLESS STEEL FINISH ON STAINLESS STEEL BASE.



PEACOCK
architects

5625 INTERSTATE NORTH PKWY
ATLANTA GEORGIA 30328
404 - 214 - 5200 PHONE
404 - 214 - 5208 FAX

THE FORUM
RENOVATION PHASE II
301 TRIBUNE STREET
ROME, GA 30161



DATE	REVISION
11/09/16	ISSUED FOR CONSTRUCTION
12/29/16	ADDENDUM 1

PROJECT NO:
420.01.01
DATE:
12/28/2016
DRAWING TITLE:
MILLWORK SECTIONS

A4.20

THIS DRAWING AND ANY REPRODUCTIONS ARE THE PROPERTY AND COPYRIGHT OF PEACOCK ARCHITECTS, INC. AND MAY NOT BE USED IN ANY MANNER WITHOUT THE EXPRESSED WRITTEN PERMISSION OF PEACOCK ARCHITECTS, INC.